

manuals **CD SCREEN PRINTING AND REPLICATION**

software packaging **Fulfillment** distribution

Job Cancellations

Orders cancelled during the manufacturing process will be invoiced according to the stage of completion at the time of cancellation.

CD Label Screenprinting

To help ensure the best possible results and turnaround times, Media Visions prefers to output film from customer supplied artwork files. Media Visions will provide you with templates to assist you in laying out your artwork for CD labels. The use of these templates is required to meet your expected turnaround times and to avoid additional charges related to artwork modifications. Templates are available on CD-ROM in several different formats.

Media Visions offers three screenprinting options:

- Standard Print. Printing from the outside edge of the CD and extends to the start of the stacking ring. See Template A.
- Print to Center **With** a Knockout for Stacking Ring. Printing from the outer edge of the CD and extends all the way to the center, providing for a knockout band for the stacking ring. See Template B.
- Print to Center **Without** a Knockout for Stacking Ring. Printing from the outer edge of the CD and extends all the way to the center. Printing over the stacking ring may cause color variations and adhesion problems. Customers requesting this printing option are required to sign a Print Deviation Agreement. The agreement removes all liability from ImaTek for any problems that arise from printing on the stacking ring. See Template C.

- For Business Card CD screen printing, see templates D, E, F.

To achieve the best screenprinting results please follow these general guidelines:

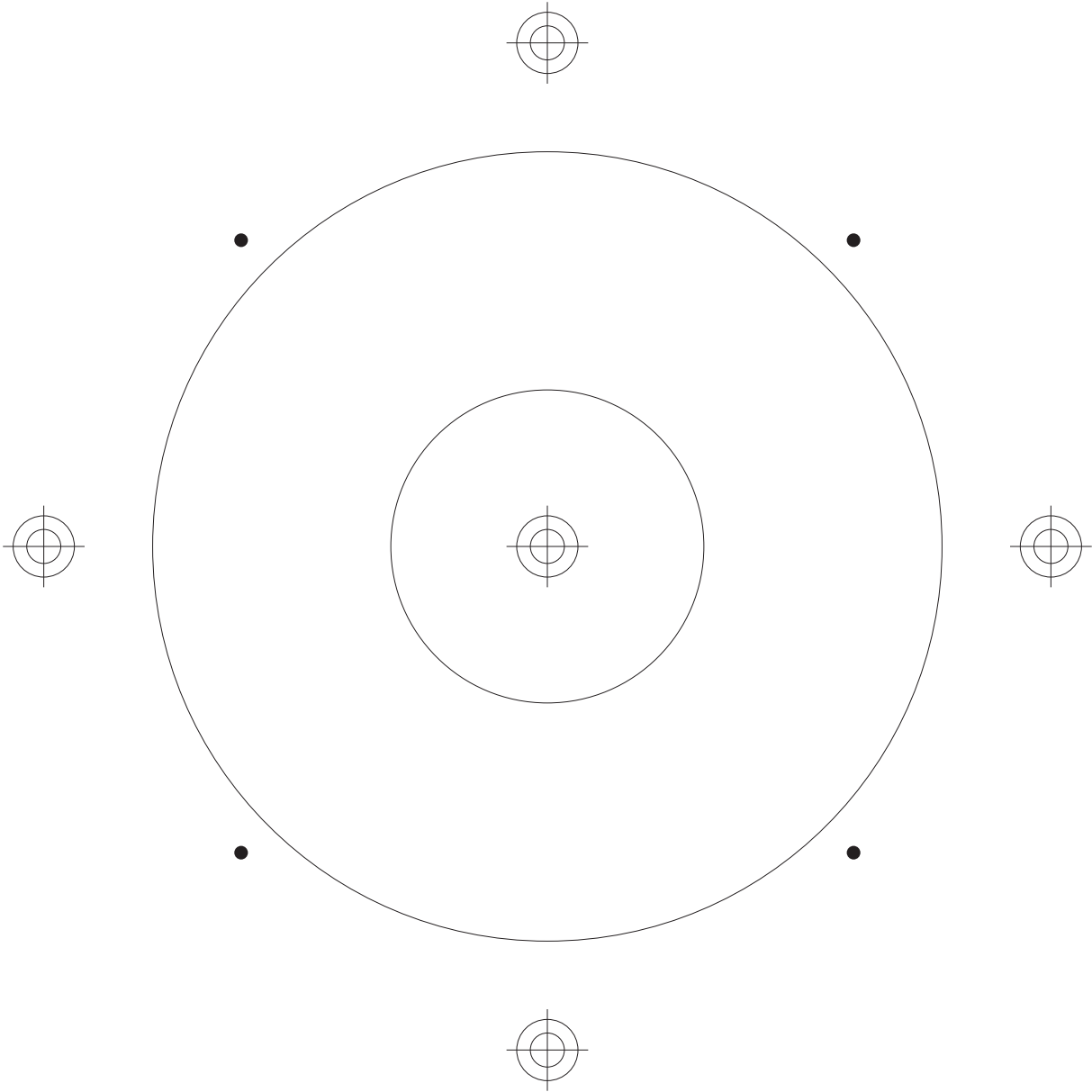
- Minimum type size for positive printing is 4 points
- Minimum type size for reverse and knockout printing is 5 points
- Minimum type size for a knockout in 4-color process printing is 6 points

Depending on artwork design, the best results are sometimes achieved by overprinting type rather than knocking it out. For 4-color printing it is usually best to underprint a solid white background (donut). In areas of the artwork where the image knocks out, the silver of the CD will appear if you do not underprint a color such as white. It is strongly recommended that you avoid the use of all script typefaces and any typefaces with serifs for type that knocks out.

A disc is made of a polycarbonate material with different printing and ink absorption properties than paper, thus it is impossible to exactly match colors between your CD label and your packaging. Media Visions is not responsible for color differences between formats.

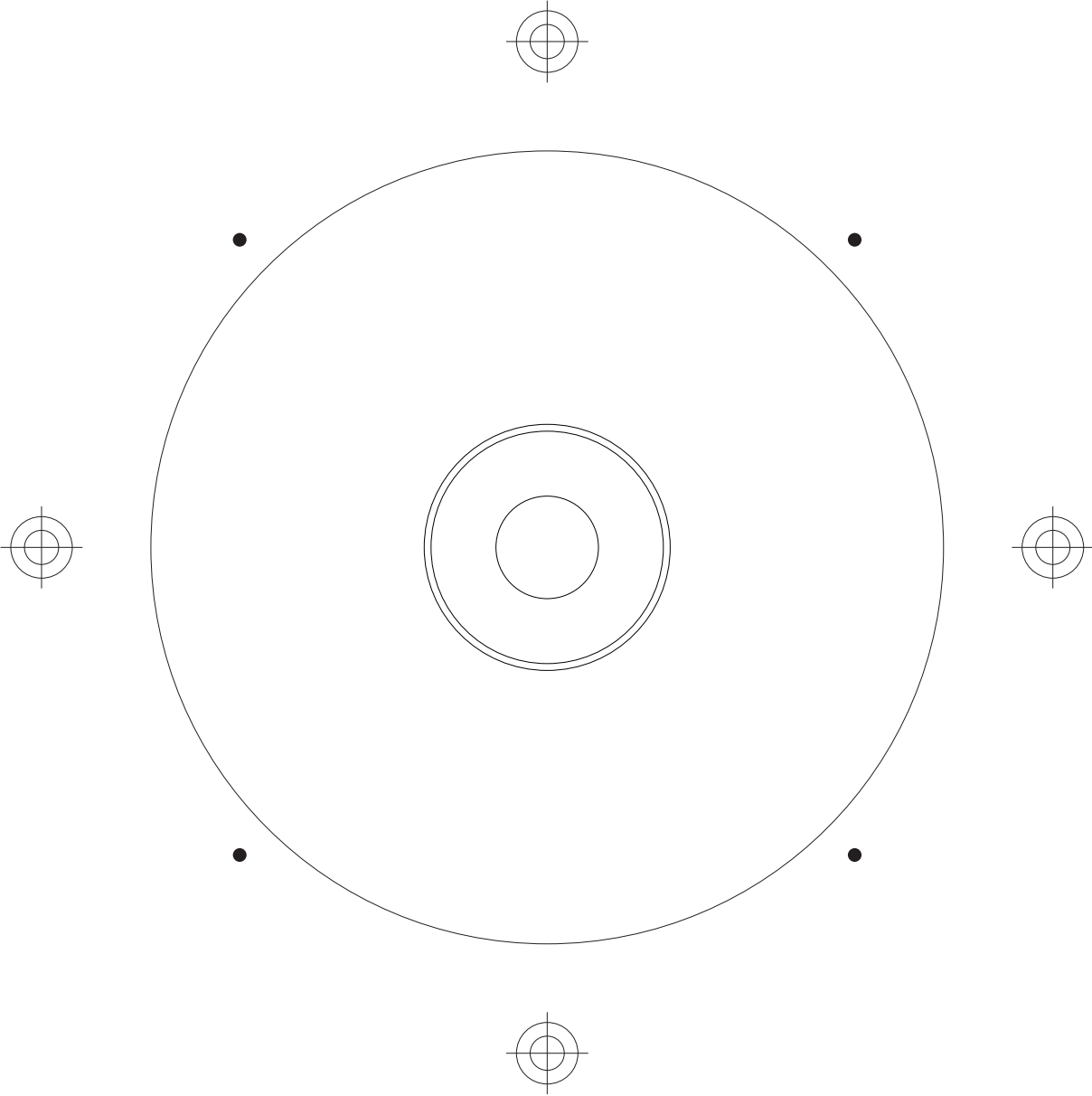
Template A

Standard Print



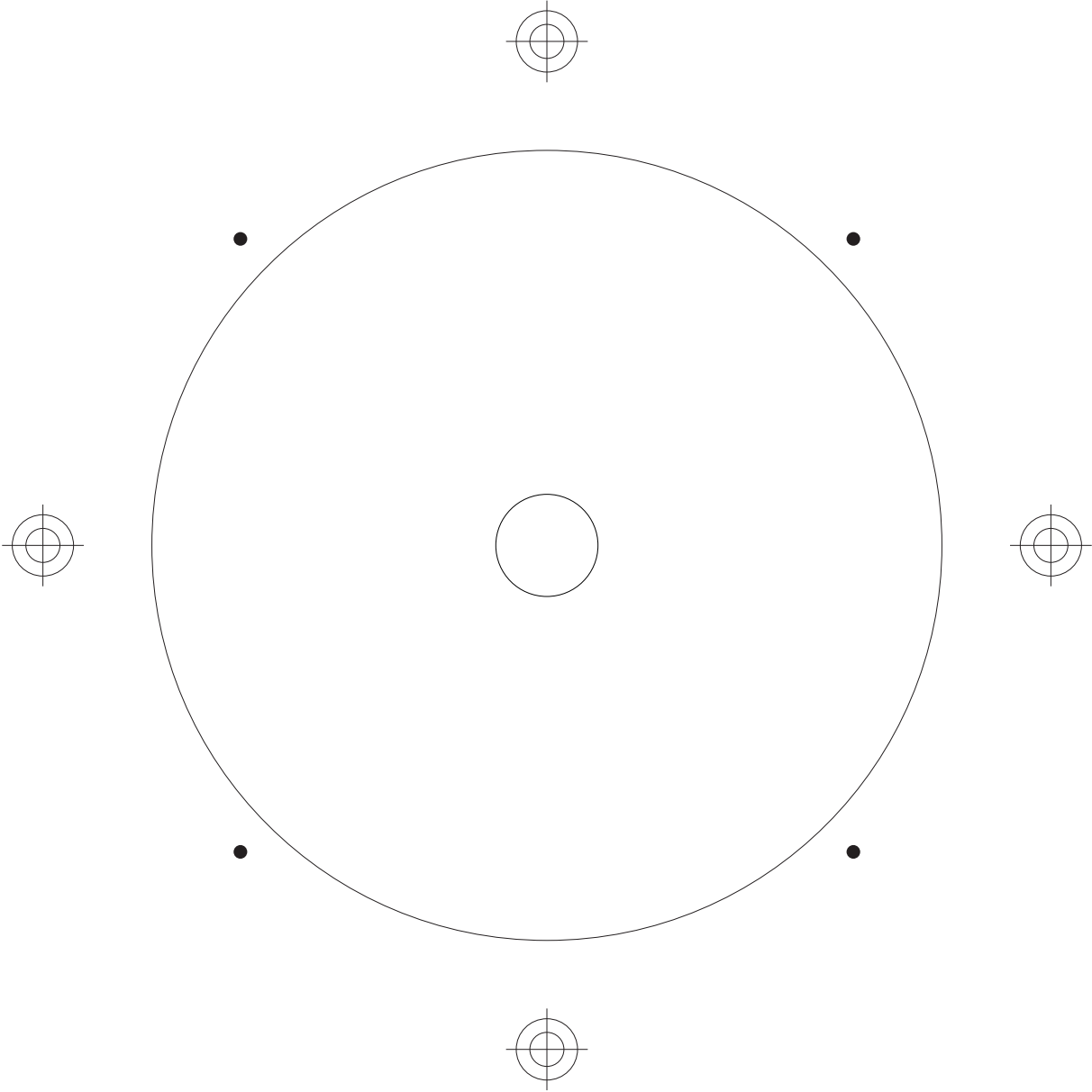
Template B

Print to Center with a knockout for the Stacking Ring



Template C

Print to Center without a knockout for the Stacking Ring



Template D

Business Card CD (58mm, 40MB)



Template E

Business Card CD (63mm, 60MB)



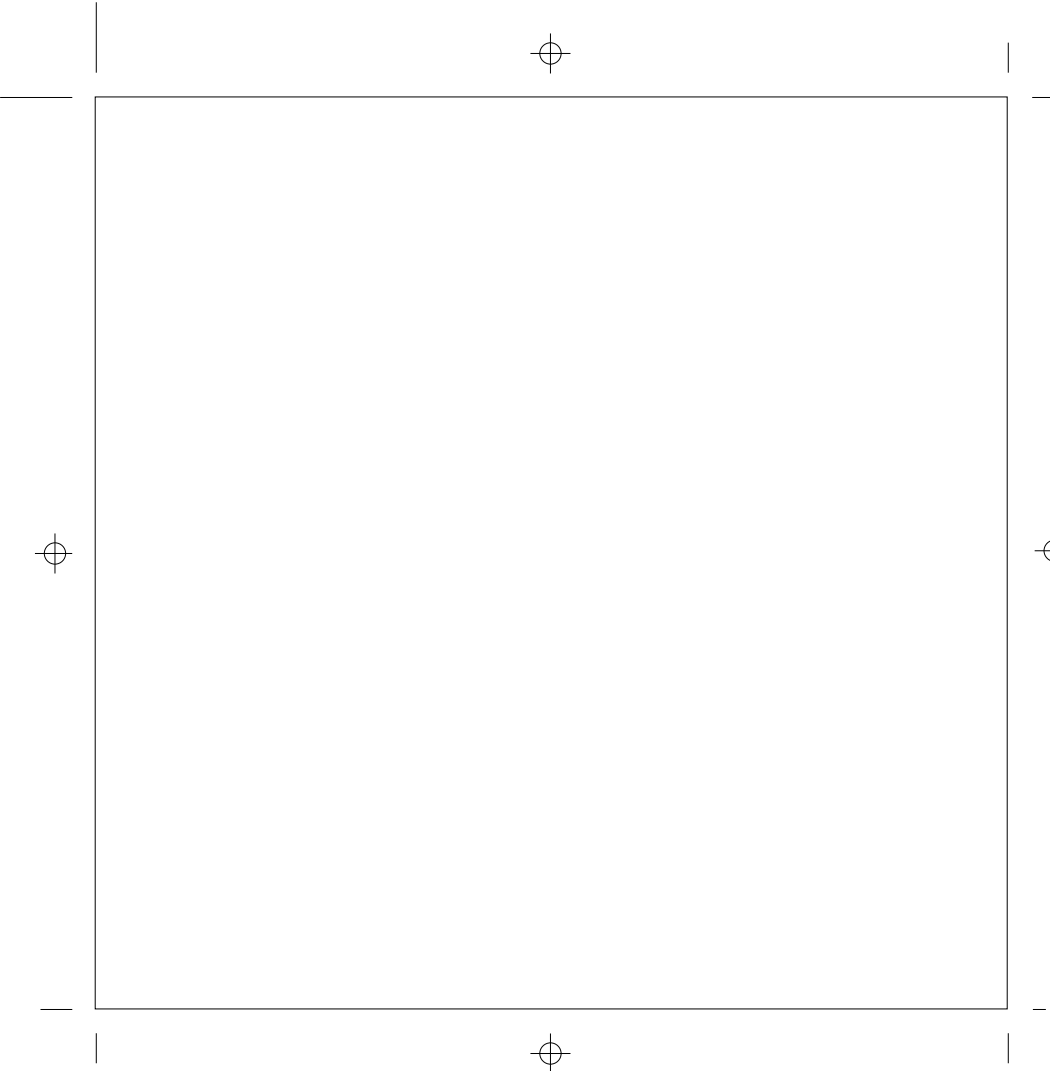
Template F

Business Card CD (66mm, 85MB)



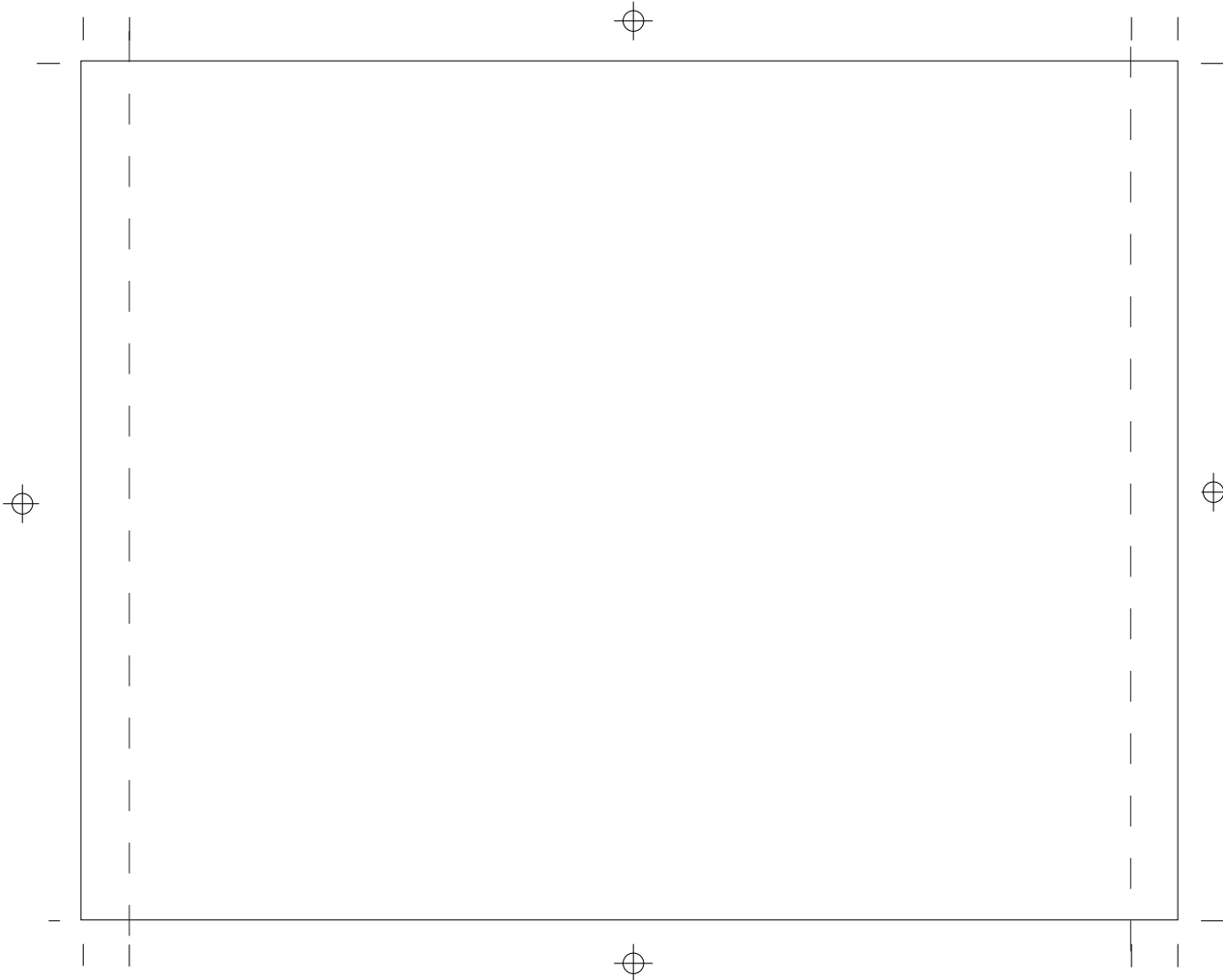
Template 1

Standard Jewel Box - Front Insert



Template 1

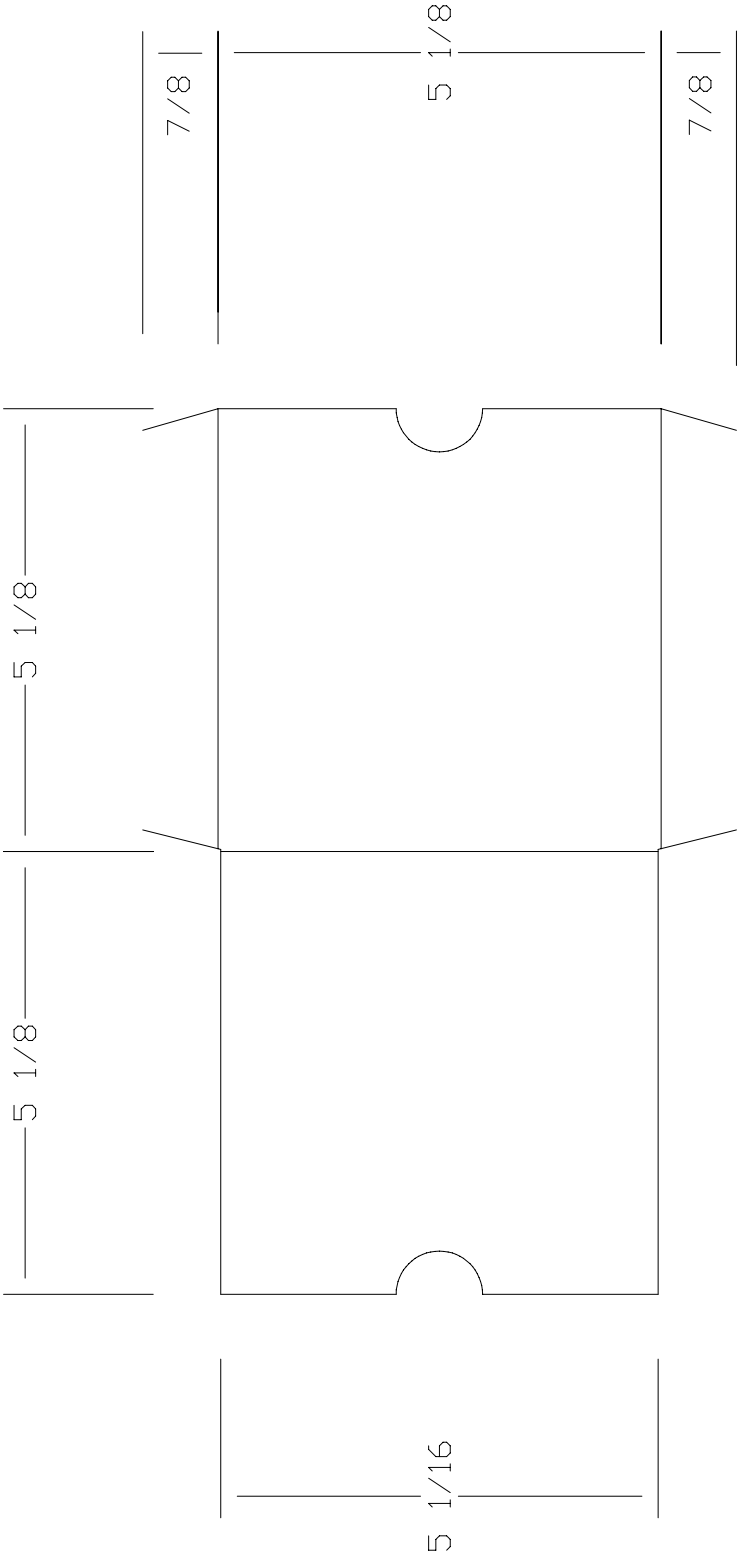
Standard Jewel Box - Back Insert



Template 2

Two Panel CD Sleeve

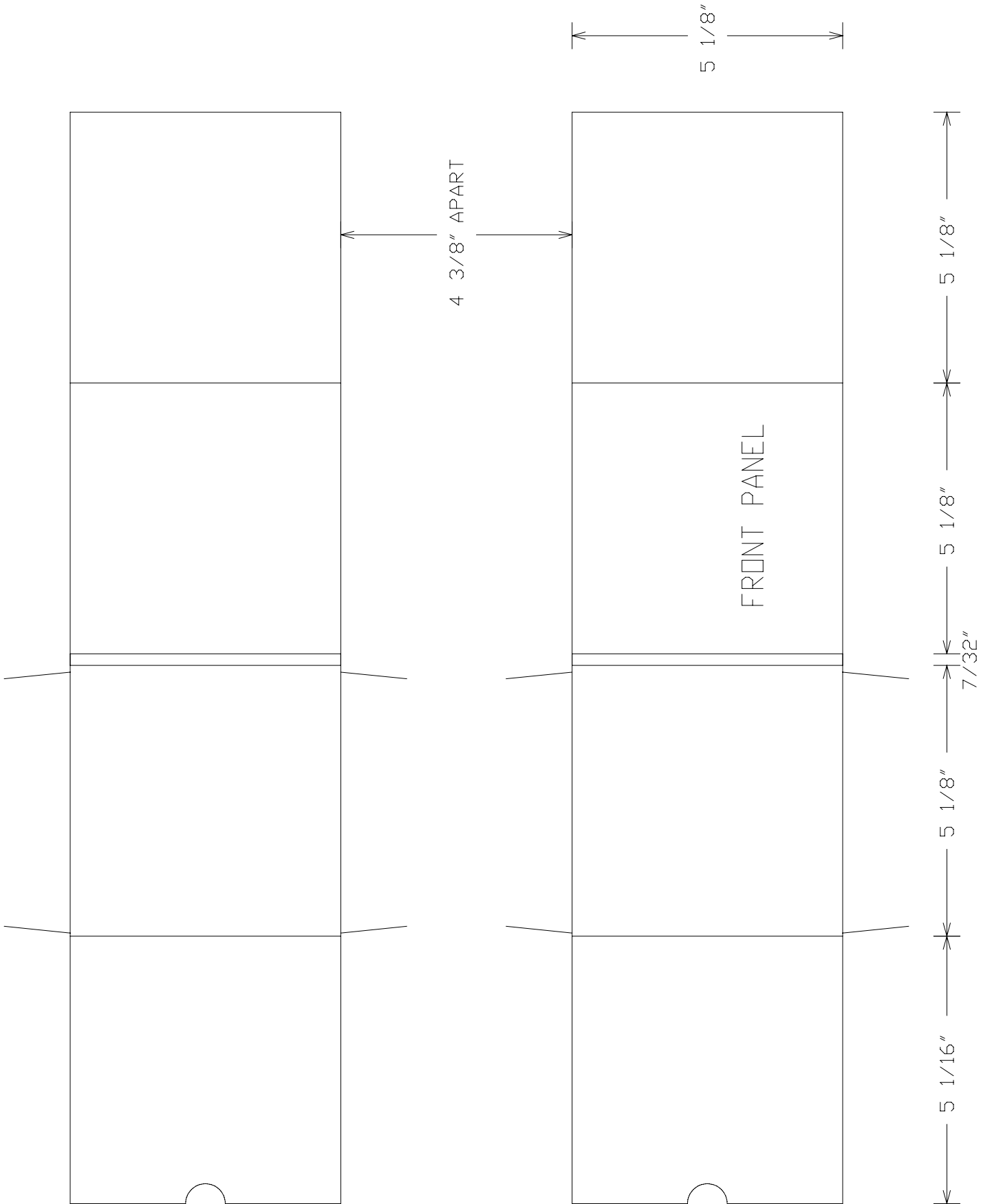
(Reduced to 40% of original size)



Template 3

Four Panel CD Sleeve

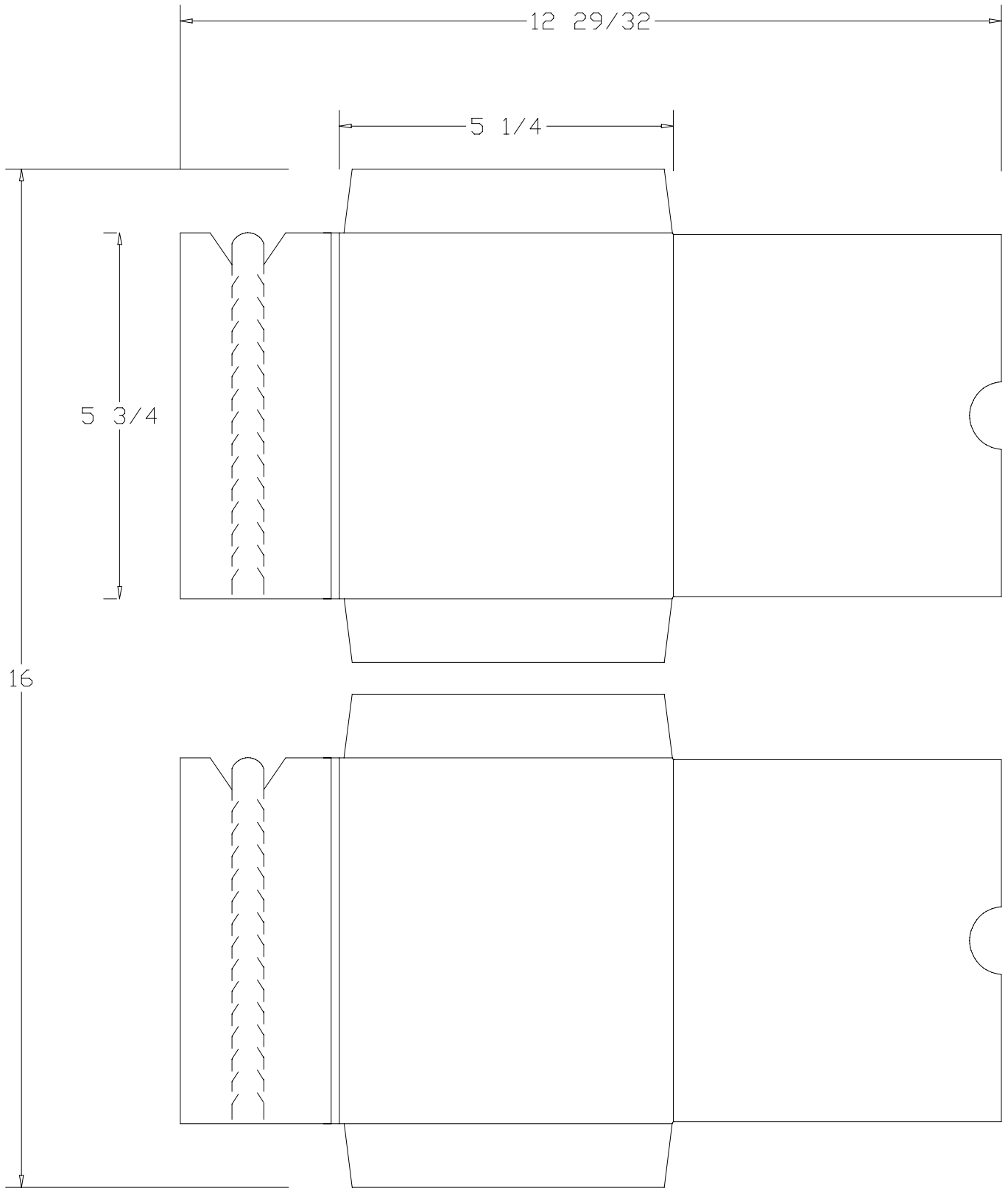
(Reduced to 40% of original size)



Template 4

CD Sleeve with Closure

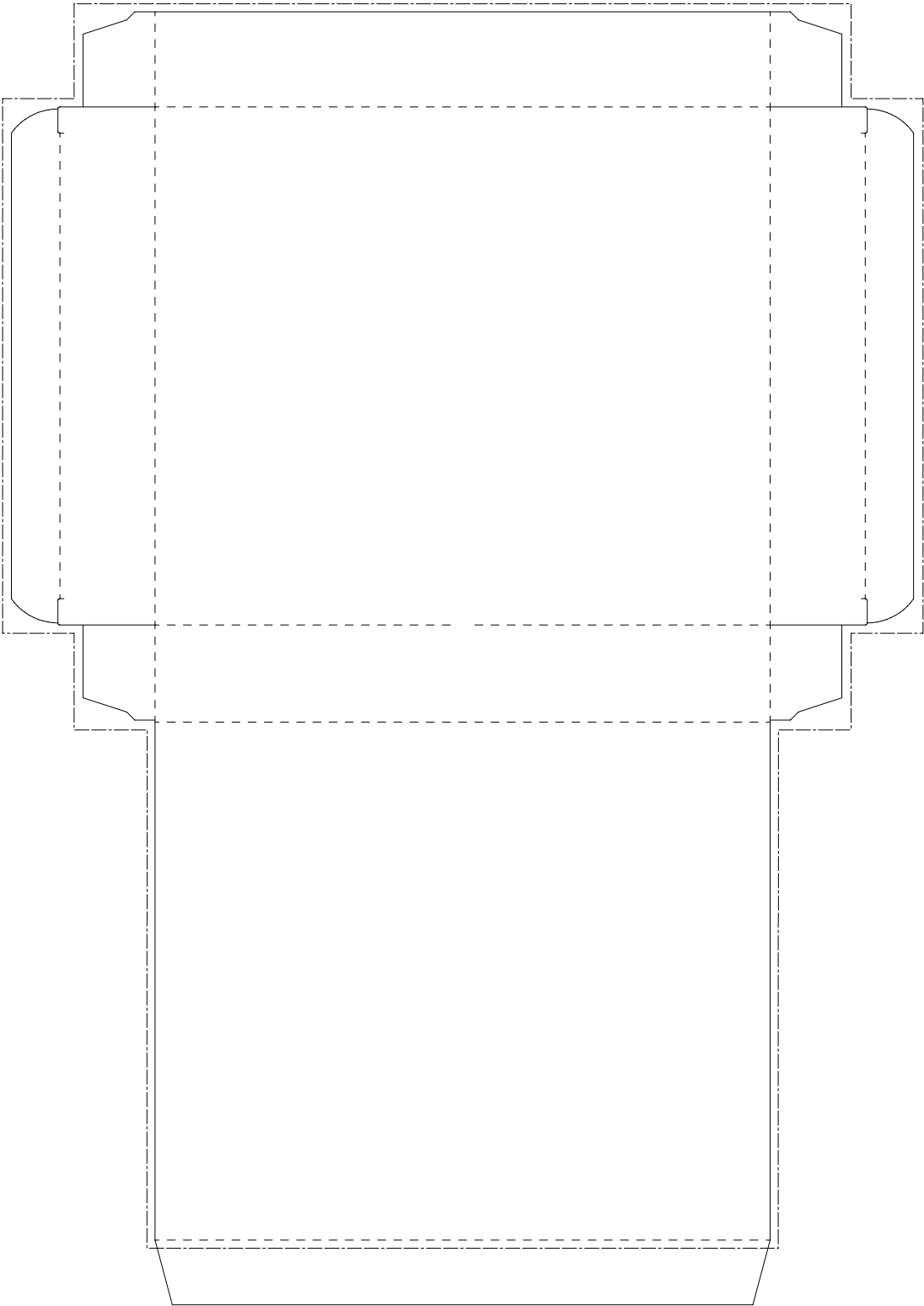
(Reduced to 45% of original size)



Template 5

Retail Box Packaging

(Reduced to 40% of original size)



manuals CD SCREEN PRINTING AND REPLICATION

software packaging fulfillment distribution